



pony™



R82^c

pony[™]

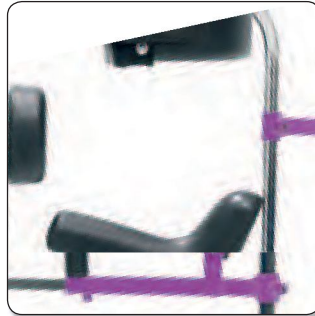
Adjustable forward lean

Adjusts to accommodate optimal walking angle and initiate the stepping process.



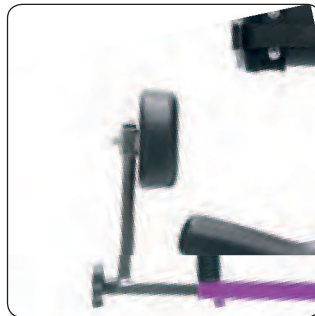
Height adjustable seat

Allows for height adjustment to fit the user and provide optimum position when walking. The child is not supposed to sit on the saddle.



Back support

Allows for height and depth adjustment for positioning the pelvis into a neutral position. Furthermore the back support can be removed for easy access of child onto the Pony.



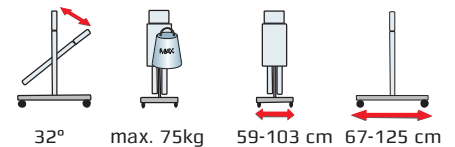
Brakes on castors

The Pony has brakes on the two front castors. Further, it is equipped with one drag wheel and directional stabilizer for added support.



The Pony is a gait trainer for disabled children. The Pony has a frame shaped like an arrow with five castors. A central bar holds the chest support and the seat with pelvic support. The bar can be tilted forwards to stimulate walking. Between the legs is a plate to avoid scissoring. The Pony is for indoor use.

The Pony is available in four sizes and suitable for children between the ages of 1½ - 12 years. Not all children are alike - that is why it is important to use the measuring chart to find the correct size.





pony™

STANDARD CONFIGURATION

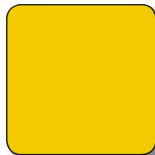
Standard

As standard the Pony is delivered with back support and saddle. Please order accessories from the following pages.



Frame colour

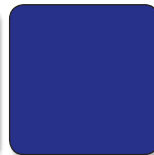
Available in different colours for size 0, 1, 2 and 3



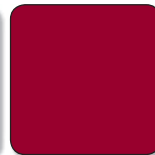
Yellow
for size 0



Purple
for size 1

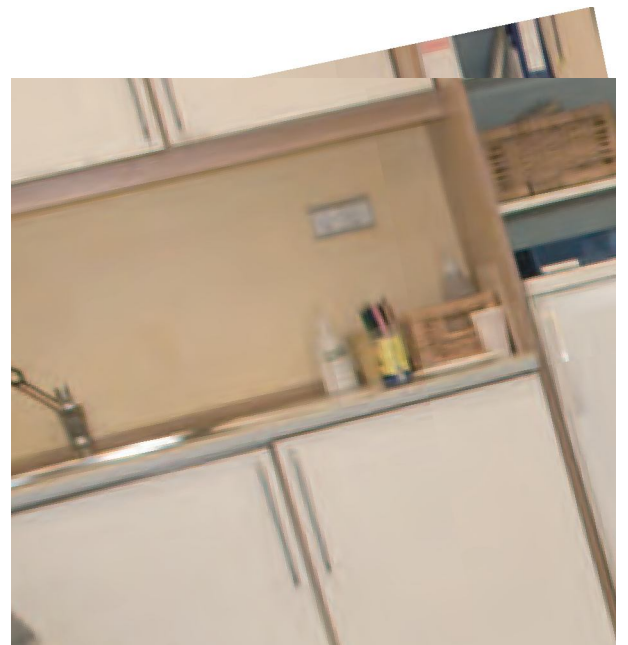


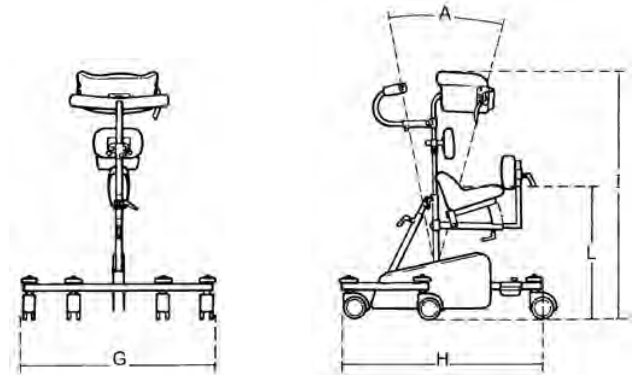
Lilac
for size 2



Red
for size 3

R82[®]





Measurements

	Size 0 cm (inch)	Size 1 cm (inch)	Size 2 cm (inch)	Size 3 cm (inch)
Seat height (L)	24-38 (9 ¹ / ₄ -14 ³ / ₄ "	38-50 (14 ³ / ₄ -19 ¹ / ₂ "	48-64 (18 ³ / ₄ -25"	55-90 (21 ¹ / ₂ -35"
Width (G)	59 (23")	69 (27")	77 (30")	103 (40 ³ / ₄ "
Length (H)	67 (26 ¹ / ₄ "	72 (28")	104 (40 ¹ / ₂ "	125 (48 ³ / ₄ "
Height (I)	52-69 (20 ¹ / ₄ -27"	60-82 (23 ¹ / ₂ -32"	68-104 (26 ¹ / ₂ -40 ¹ / ₂ "	93-130 (36 ¹ / ₄ -50 ³ / ₄ "
Angle range (A)	32°	32°	32°	32°
Weight	7 kg (15,5 lb)	10 kg (22 lb)	13,5 kg (30 lb)	17 kg (37,5 lb)
Max. load/user weight	30 kg (66 lb)	40 kg (88 lb)	50 kg (110 lb)	75 kg (165 lb)

